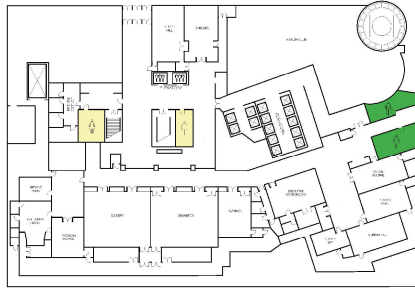


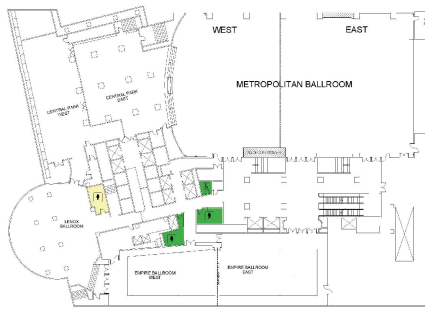
SHERATON NEW YORK TIMES SQUARE

| | | |
|------------|--|--|
| KEY |  Gendered Restrooms |  All Gender Restrooms |
|------------|--|--|

Lower Level



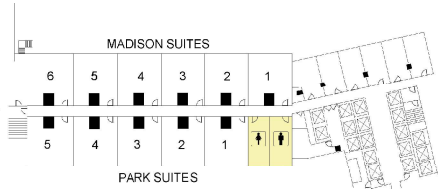
Second Floor



Third Floor



Fifth Floor



**ENGAGING
SOCIAL JUSTICE
FOR A BETTER WORLD**



114th ASA Annual Meeting
August 10-13, 2019
New York, NY

WHAT ARE YOU DOING TO MAKE THE WORLD BETTER



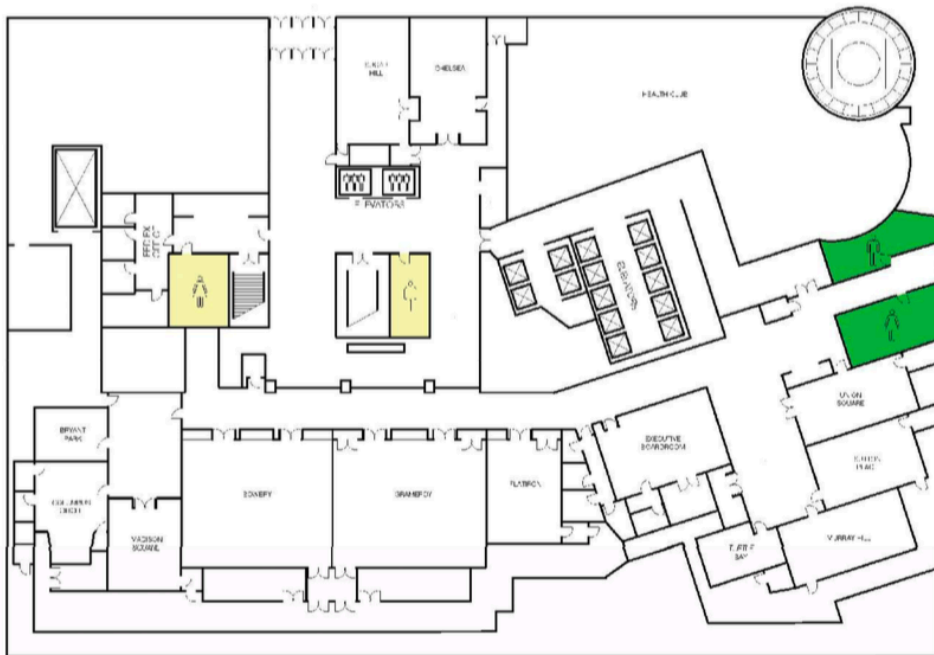
Sheraton Hotel

Lower Level:

There are two sets (with, in Jason's opinion, a confusing layout). The set nearest the stairs and elevators will be BGS. It is also used by the gym customers and FedEx employees, which limits our ability to change them. There are few ASA meeting rooms near this location.

The set tucked in the far back is nearest the majority of rooms on this floor that will be in use. This set will be AG.

Lower Level



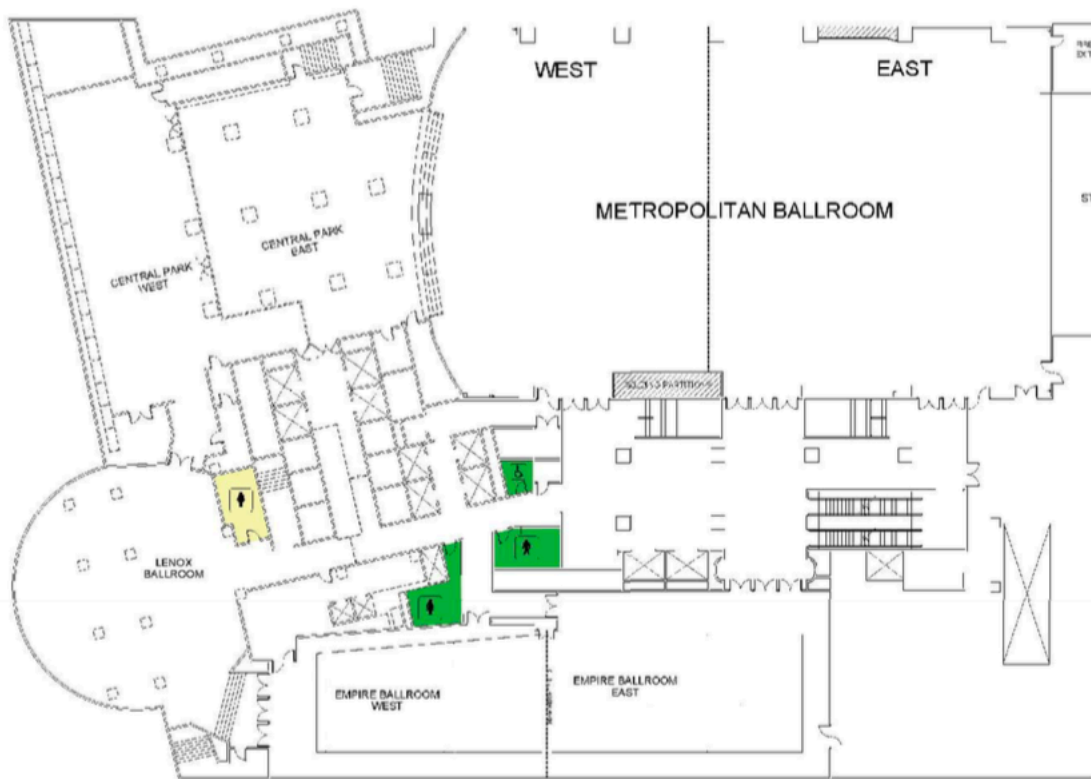
Lobby

There is one set of restrooms near the escalators, though a bit tucked away. These are closed down at 5 PM. They will remain BGS.

2nd Floor:

There are 4 bathrooms on this floor. There is a single use restroom. This will remain as-is with no change in signage. One set of BGS rooms will be converted to AG. There is one additional binary women's segregated room tucked away. This will be left as-is, hopefully to assist throughput in women's and feminine presenting people's use of stalled rooms.

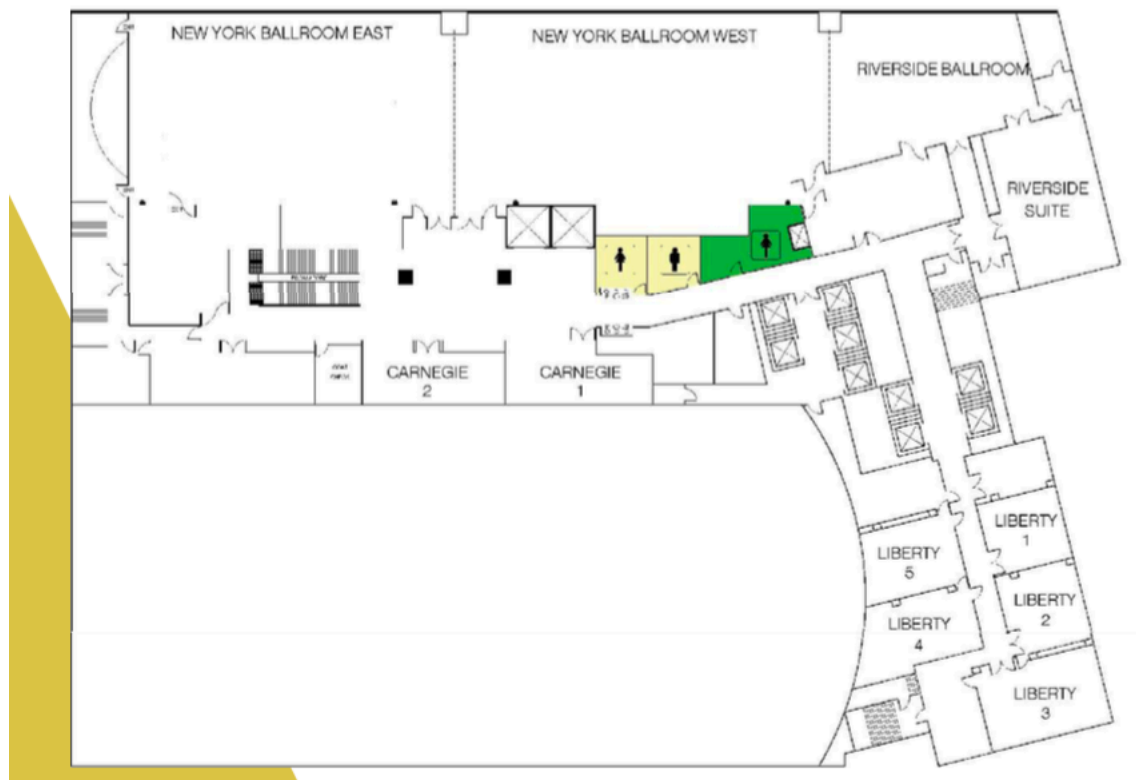
Second Floor



3rd Floor:

There is the same set of restrooms on this floor as on the 2nd floor. The single-use room will be left as-is. There will be a set of BGS rooms. This time, the additional binary women's segregated room will be converted to AG.

Third Floor



5th Floor:

Only two small rooms are used on this floor. It has 1 set of restrooms. They will be BGS.

Fifth Floor

